



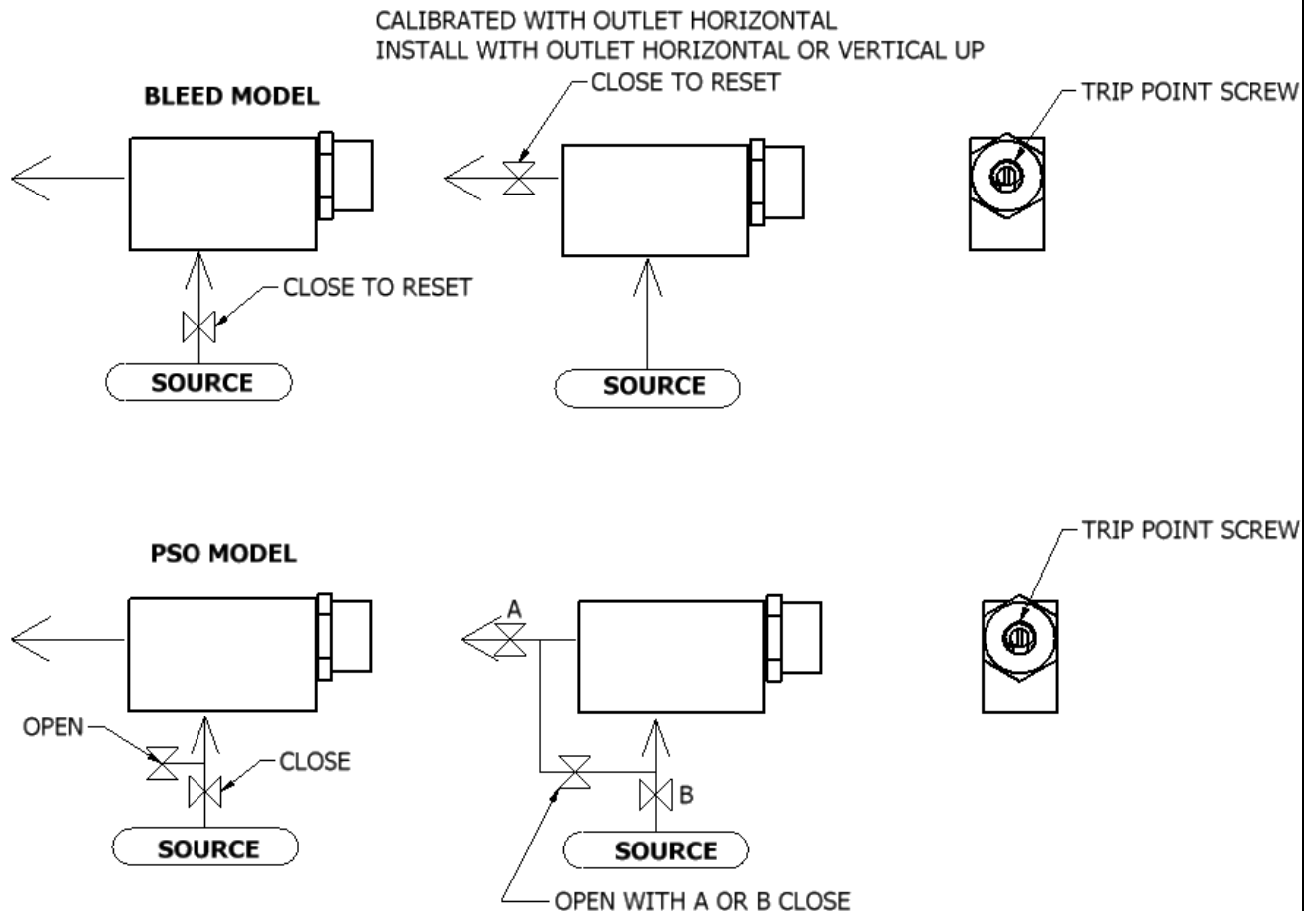
3077 SW 13<sup>th</sup> Drive, Deerfield Beach, FL 33442, Phone (954) 428-8259, www.chemtec.com

## INSTALLATION; EFV, EFVMRS and HPEFV SERIES

**INSTALLATION;** Teflon tape suggested for fittings. Avoid Teflon tape, pipe paste or other foreign material from entering the unit. We recommend the use of a 100 micron filter. No magnetic particles.

**ACTUATION;** All EFVs are calibrated with the Outlet port horizontal. A trip point 3 times the maximum flow rate at the lowest normal line pressure is suggested. Trip point change should be done at atmospheric pressure. Always hold the hex when turning the Trip Point Screw. Never remove the retaining clip. Field calibration can be done with a flowmeter. Turn the Trip Point Screw **CLOCKWISE** to **DECREASE** the trip point and **COUNTERCLOCKWISE** to **INCREASE** the trip point. Calibration is done using air equivalent flow. All EFVs will not close or be adversely affected by back flow.

**MAINTENANCE;** The EFV normally would not require maintenance except for periodic cleaning determined by the application. A suggested cleaning and seal replacement would be every 5 years depending on the fluid.

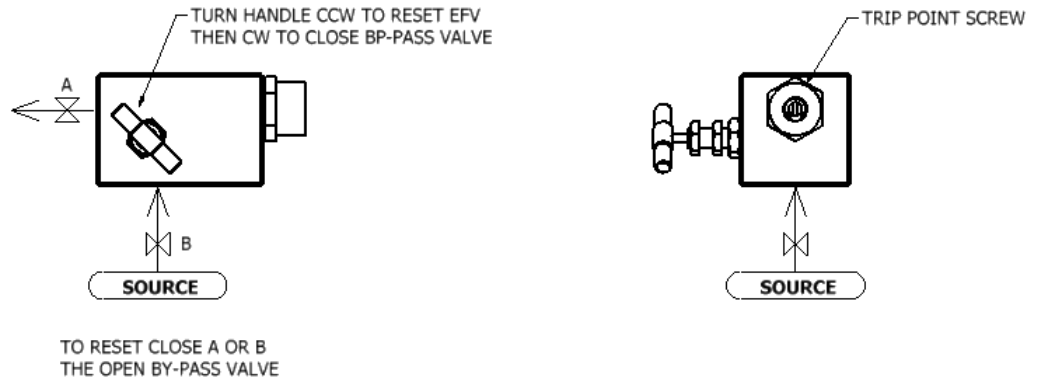


OVER

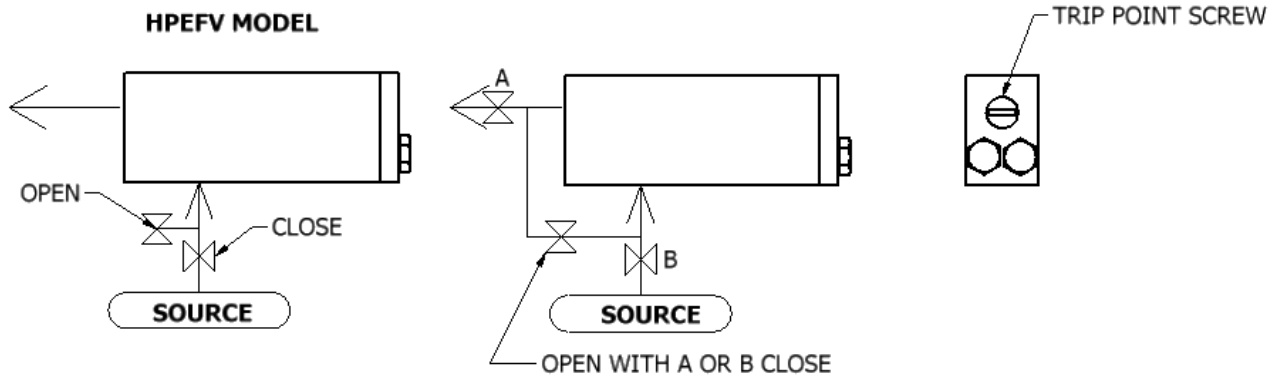
*\*Users are solely accountable for product selection, regardless of any recommendations or suggestions provided by ChemTec Equipment Company, Inc. Users should base product selection on their own analysis and testing to determine functionality and material compatibility in relation to their application. To ensure safe and trouble-free performance, it is essential to adhere to proper installation, operation, and maintenance procedures.*

CALIBRATED WITH OUTLET HORIZONTAL  
 INSTALL WITH OUTLET HORIZONTAL OR VERTICAL UP

**MRS MODEL**



CALIBRATED WITH OUTLET HORIZONTAL  
 INSTALL WITH OUTLET HORIZONTAL OR VERTICAL UP



EFVIANDM090914

*\*Users are solely accountable for product selection, regardless of any recommendations or suggestions provided by ChemTec Equipment Company, Inc. Users should base product selection on their own analysis and testing to determine functionality and material compatibility in relation to their application. To ensure safe and trouble-free performance, it is essential to adhere to proper installation, operation, and maintenance procedures.*