

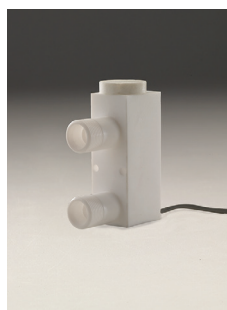
ChemTec's Ultra High Purity Teflon® LPH Series Flow Monitors

Flow Range	50 ML to 5000 ML
Flared Fitting Ports	1/4", 3/8", 1/2"
Super-300 Type Nippon Pillar Fitting®	1/8", 1/4", 3/8", 1/2", 3/4"

**More Custom Options Available, please contact the factory



Flared Fitting



NPS300

ChemTec's Ultra High Purity Teflon® MAO Flow Meter

Calibration in Water Tables		VDC	Hz	mA	Ports FN
MAO 125/250	0 ML - 1800 ML	0-5	0-200	0-20	1/8" - 1/4"
MAO 500	0.5 GPM - 3.5 GPM	0-5	0-200	0-20	1/2"



MAO 125/250



MAO 500

**Users are solely accountable for product selection, regardless of any recommendations or suggestions provided by ChemTec Equipment Company, Inc. Users should base product selection on their own analysis and testing to determine functionality and material compatibility in relation to their application. To ensure safe and trouble-free performance, it is essential to adhere to proper installation, operation, and maintenance procedures.*