

Key Features

Best for applications where the ratio (Normal Flow/ Set Point) is 10:1 or Greater, Minimal Pressure Drop.

Features

- Broad Range of Adjustability
- Compact Size
- High Resolution
- Materials: 316S S, Brass or Teflon®

Applications

- Welding Systems
- Analyzers
- Vacuum Systems
- Cooling Systems

Operation

When flow is increased, the magnetic piston is forced against a bias spring. As the magnet comes near the adjustable reed switch it actuates, indicating proper flow. When flow decreases the spring forces the piston in the opposite direction deactuating the reed switch an indicating a reduced or no flow situation. The magnetic piston actuates a hermetically sealed reed switch, which is encapsulated in the body of the unit, out of the air/water path.

- All models field adjustable
- Deactuation (decreasing flow) averages 40% less than actuation (increasing flow)
- Repeatability \pm 2%
- Correction must be made for attitudes other than horizontal
- Unit will pass greater flows



Calibration Range

| Model | Air LPM (SCFM) | Adjustable Range Increasing Flow Water LPM (GPM) | Inlet/Outlet FNPT Port Inches |
|----------|--------------------------|--|-------------------------------|
| LCA-250* | 14.16 (0.5) 1416 (50) | 0.38-15.1 (0.10 - 4) | 1/4" |
| LCA-375* | 14.16 (0.5) 1416 (50) | 1.89-15.1 (0.5 - 4) | 3/8" |
| LCA-500* | 28.32 (1) 2124 (75) | 1.89 - 37.9 (0.5 - 10) | 1/2" |
| LCA-750* | 141.6 (5) 3398 (120) | 3.79 - 56.8 (1 - 15) | 3/4" |

Pressure Loss

| Model | Air LPM (SCFM) | Water LPM (GPM) | Δ P BARD (PSID) |
|-------------|----------------|-----------------|------------------------|
| LCA-250/375 | | | |
| Minimum | 14.16 (0.5) | 0.38 (0.10) | 0.34 (0.5) |
| Maximum | 1416 (50) | 15.14 (4) | 0.21 (3) |
| LCA-500 | | | |
| Minimum | 28.32 (1) | 1.89 (0.5) | 0.069 (1) |
| Maximum | 2124 (75) | 37.85 (10) | 0.689 (10) |
| LCA-750 | | | |
| Minimum | 141.6 (5) | 3.79 (1) | 0.10 (1.5) |
| Maximum | 3398 (120) | 56.8 (15) | 0.62 (9) |

Specifications

| Model | Weight Lbs (kg) | Max Working Pressure PSIG (barg) | Wetted Parts |
|-----------|-----------------|----------------------------------|---------------------|
| LCA-250-P | 0.375 (0.17) | 100 (6.89) | PVC, Epoxy, 316SS |
| LCA-250-B | 1.4 (0.635) | 1500 (103.42) | Brass, Epoxy, 316SS |
| LCA-250-S | 1.4 (0.635) | 3000 (206.84) | 316SS, Epoxy |
| LCA-375-P | 0.375 (0.17) | 100 (6.89) | PVC, Epoxy, 316SS |
| LCA-375-B | 1.4 (0.635) | 1500 (103.42) | Brass, Epoxy, 316SS |
| LCA-375-S | 1.4 (0.635) | 3000 (206.84) | 316SS, Epoxy |
| LCA-500-P | 0.375 (0.17) | 100 (6.89) | PVC, Epoxy, 316SS |
| LCA-500-B | 1.4 (0.635) | 1500 (103.42) | Brass, Epoxy, 316SS |
| LCA-500-S | 1.4 (0.635) | 3000 (206.84) | 316SS, Epoxy |
| LCA-750-P | 0.625 (0.283) | 100 (6.89) | PVC, Epoxy, 316SS |
| LCA-750-B | 1.7 (0.771) | 1500 (103.42) | Brass, Epoxy, 316SS |
| LCA-750-S | 1.7 (0.771) | 3000 (206.84) | 316SS, Epoxy |


Temperature Operating Range

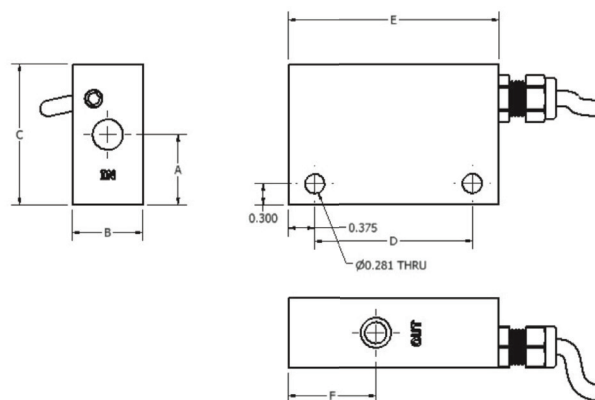
- 0° to 228°F (-17° to 104°C) for Brass and Stainless Steel
 - 32° to 120°F (0° to 49°C) for PVC
 - 32° to 120°F for Acrylic
- For other temperature ranges consult factory



*Users are solely accountable for product selection, regardless of any recommendations or suggestions provided by ChemTec Equipment Company, Inc. Users should base product selection on their own analysis and testing to determine functionality and material compatibility in relation to their application. To ensure safe and trouble-free performance, it is essential to adhere to proper installation, operation, and maintenance procedures.

| Switch Data | SPST | SPDT |
|-------------------------------|------|------|
| Maximum Switching Voltage | | |
| DC (V) | 250 | 175 |
| AC (V) | 265 | 120 |
| Contact Rating | | |
| DC (W) | 50 | 5 |
| AC (VA) | 50 | 5 |
| Maximum Switching Current (A) | | |
| DC (A) | 1.5 | 0.25 |
| AC (A) | 1.1 | 0.18 |

| Leads | SPST UL File #E471070 | SPDT UL File #E471070 |
|---|---|--------------------------|
|  <p>leads 39 in. min. from body 22 AWG, PVC Jacketed Wired</p> |  <p>leads 39 in. min. from body 22 AWG PVC jacketed wired</p> <ul style="list-style-type: none"> • red - N.C. • green - N.O. • black - Common | |



Installation

Mount with the inlet port on the side horizontally. Other attitudes change the adjustable range of the unit. A 100 micron filter is recommended.

| Dimensions | | | | | | |
|------------|-------------|-------------|-------------|--------------|-------------|-------------|
| Model | A | B | C | D | E | F |
| LCA-250 | 1.00 (25.4) | 1.00 (25.4) | 2.00 (50.8) | 2.25 (57.15) | 3.0 (76.2) | 1.25 (31.8) |
| LCA-375 | 1.00 (25.4) | 1.00 (25.4) | 2.00 (50.8) | 2.25 (57.15) | 3.0 (76.2) | 1.25 (31.8) |
| LCA-500 | 1.00 (25.4) | 1.00 (25.4) | 2.00 (50.8) | 2.25 (57.15) | 3.0 (76.2) | 1.25 (31.8) |
| LCA-750 | 1.63 (41.4) | 1.25 (31.8) | 2.75 (69.9) | 3.25 (82.55) | 4.0 (101.6) | 1.63 (41.4) |

How to Order

Sales@ChemTec.com | 800.222.2177

| Model | Materials | Type of Service | Switch |
|---------|-----------|-----------------|-------------------------------|
| LCA 250 | P PVC | W Water | N.O. Normally Open |
| 375 | A Acrylic | G Gas | SPDT Single Pole Double Throw |
| 500 | B Brass | | FP* Factory Preset |
| 750 | S 316SS | | |

*Consult Factory

All dimensions are subject to change for quality improvement. Not responsible for printing errors.

*Users are solely accountable for product selection, regardless of any recommendations or suggestions provided by ChemTec Equipment Company, Inc. Users should base product selection on their own analysis and testing to determine functionality and material compatibility in relation to their application. To ensure safe and trouble-free performance, it is essential to adhere to proper installation, operation, and maintenance procedures.

ChemTec.com | info@ChemTec.com | P: 954.420.6174 | F: 954.428.8745 | 3077 S.W. 13th Dr., Deerfield Beach, FL 33442