

FAV Series

Adjustable Flow Monitor

15

Key Features

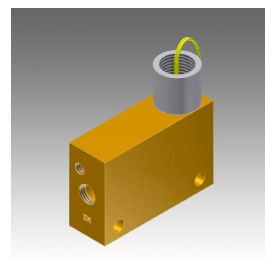
Best for applications where the normal flow to set point is 10:1 or greater.

Features

- Adjustable Flow Monitor
- Monitors both Gases and Liquids
- Materials: Brass or 316SS
- Confirms: Normal Flow Conditions
- Senses: High Flow or Low Flow Conditions
- Output: Switch Contact

Applications

- Process Controls
- Fire Control Systems
- Water Treatment Chemicals
- Cooling Systems
- Heat Pumps
- Hydraulic Lifts
- Industrial Analyzers
- Plant Safety



Operation

When flow is increased, the magnetic piston is forced against a bias spring. As the magnet comes near the adjustable reed switch it actuates, indicating proper flow. When flow decreases the spring forces the piston in the opposite direction deactuating the reed switch and indicating a reduce or no flow condition. The magnetic piston actuates a hermetically sealed reed switch, which is encapsulated in the body of the unit, out of the air/water path.

- Actuation points for air at 68 F and 14.7 PSIA with increasing flow.
- Deactuation (decreasing flow) averages 40% less than actuation (increasing flow)
- Repeatability $\pm 2\%$
- Unit will pass greater flows

Correction must be made for other fluids, line pressure and temperatures. Please consult your representative or the factory.

Specifications

| Model | Weight Lbs (kg) | Max Working Pressure PSIG (barg) | Wetted Parts |
|-----------|-----------------|----------------------------------|---------------------|
| FAV-250-B | 1.4 (0.635) | 1500 (103.42) | Brass, Epoxy, 316SS |
| FAV-250-S | 1.4 (0.635) | 3000 (206.84) | 316SS, Epoxy |
| FAV-375-B | 1.4 (0.635) | 1500 (103.42) | Brass, Epoxy, 316SS |
| FAV-375-S | 1.4 (0.635) | 3000 (206.84) | 316SS, Epoxy |
| FAV-500-B | 1.4 (0.635) | 1500 (103.42) | Brass, Epoxy, 316SS |
| FAV-500-S | 1.7 (0.635) | 3000 (206.84) | 316SS, Epoxy |
| FAV-750-B | 1.7 (0.771) | 1500 (103.42) | Brass, Epoxy, 316SS |
| FAV-750-S | 1.7 (0.771) | 3000 (206.84) | 316SS, Epoxy |

Temperature Operating Range

- 0° to 220°F (-17° to 104°C) for Brass and Stainless Steel
- For other temperature ranges consult factory.

Calibration Range

| Model | Air SLPM (SCFM) | Water LPM (GPM) | Inlet/Outlet FNPT Port Inches |
|---------|-----------------|-----------------|-------------------------------|
| FAV-250 | | | 1/4" |
| Minimum | 14.16 (0.5) | 0.38 (0.10) | |
| Maximum | 1416 (50) | 15.14 (4) | |
| FAV-375 | | | 3/8" |
| Minimum | 14.16 (0.5) | 0.38 (0.10) | |
| Maximum | 1416 (50) | 15.14 (4) | |
| FAV-500 | | | 1/2" |
| Minimum | 28.32 (1) | 1.89 (0.5) | |
| Maximum | 2124 (75) | 37.85 (10) | |
| FAV-750 | | | 3/4" |
| Minimum | 141.6 (5) | 3.78 (1) | |
| Maximum | 3398 (120) | 75.7 (20) | |

Pressure Loss

| Model | Air Flow Rate SLPM (SCFM) | Water Flowrate LPM (GPM) | ΔP to Atmosphere BARD (PSID) |
|-------------|---------------------------|--------------------------|--------------------------------------|
| FAV-250/375 | | | |
| Minimum | 14.2 (0.5) | 0.38 (0.10) | 0.34 (0.5) |
| Maximum | 1416 (50) | 15.14 (4) | 0.21 (3) |
| FAV-500 | | | |
| Minimum | 28.32 (1) | 1.89 (0.5) | 0.069 (1) |
| Maximum | 2124 (75) | 37.85 (10) | 0.689 (10) |
| FAV-750 | | | |
| Minimum | 141.6 (5) | 3.78 (1) | 0.10 (1.5) |
| Maximum | 3398 (120) | 75.7 (20) | 0.62 (9) |





**Users are solely accountable for product selection, regardless of any recommendations or suggestions provided by ChemTec Equipment Company, Inc. Users should base product selection on their own analysis and testing to determine functionality and material compatibility in relation to their application. To ensure safe and trouble-free performance, it is essential to adhere to proper installation, operation, and maintenance procedures.*

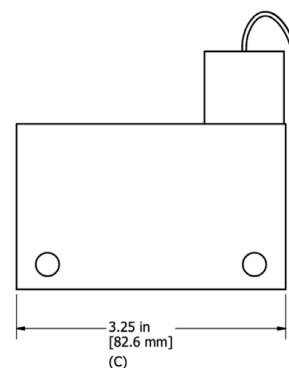
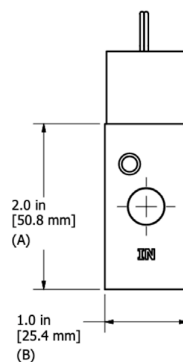
FAV Series

Adjustable Flow Monitor

16

| Switch Data | SPST | SPDT |
|-------------------------------|------|------|
| Maximum Switching Voltage | | |
| DC (V) | 250 | 175 |
| AC (V) | 265 | 120 |
| Contact Rating | | |
| DC (W) | 50 | 5 |
| AC (VA) | 50 | 5 |
| Maximum Switching Current (A) | | |
| DC (A) | 1.5 | 0.25 |
| AC (A) | 1.1 | 0.18 |

| Leads | SPST UL File #E471070 | SPDT UL File #E471070 |
|---------------------------------------------------------------------------------------------------------------------------------------------|---------------------------------------------------------------------------------------------------------------------------------------------------------------------------------------------------------------------------------------------------------------|--------------------------|
|  <p>leads 18 in. min. from body 22 AWG, TFE insulation</p> |  <p>leads 18 in. min. from body 24 AWG, TFE insulation</p> <ul style="list-style-type: none"> • green - N.C. • blue - N.O. • white - Common | |



Installation

Mount with the inlet port on the side horizontally. Other attitudes change the adjustable range of the unit. A 100 micron filter is recommended.

Dimensions

| Model | A | B (Metal) | B (Plastic) | C |
|---------|-------------|-------------|----------------|-------------|
| FAV-250 | 2.0 (50.8) | 1.00 (25.4) | 1.25 (31.75) | 3.25 (82.6) |
| FAV-375 | 2.0 (50.8) | 1.00 (25.4) | 1.25 (31.75) | 3.25 (82.6) |
| FAV-500 | 2.0 (50.8) | 1.00 (25.4) | 1.375 (34.925) | 3.25 (82.6) |
| FAV-750 | 2.75 (69.9) | 1.25 (31.8) | 1.50 (38.1) | 4.25 (108) |

How to Order

Sales@ChemTec.com | 800.222.2177

| Model | Materials | Type of Service | Switch | Options |
|------------------------------|--------------------|------------------|-----------------------------------------------------|-------------------------------------------------------------------|
| FAV 250 375 500 750 | B Brass S 316SS | W Water G Gas | N.O. Normally Open SPDT Single Pole Double Throw | HT High Temperature Options 340 ° F (171°C) FP* Factory Preset |

*Consult Factory | Viton® - E.I. Dupont & Co | Teflon® - E.I. Dupont & Co | Kalrez® - E.I. Dupont & Co
All dimensions are subject to change for quality improvement. NOT responsible for printing errors.

**Users are solely accountable for product selection, regardless of any recommendations or suggestions provided by ChemTec Equipment Company, Inc. Users should base product selection on their own analysis and testing to determine functionality and material compatibility in relation to their application. To ensure safe and trouble-free performance, it is essential to adhere to proper installation, operation, and maintenance procedures.*

ChemTec.com | info@ChemTec.com | 954.420.6174 | 3077 S.W. 13th Dr., Deerfield Beach, FL 33442