

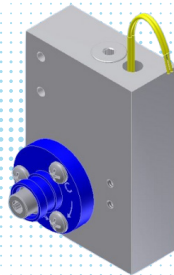
ChemTec is a leading provider of engineered flow solutions, offering flow monitors, flow meters, and excess flow valves designed for optimal performance and reliability. With over 50 years of expertise, we ensure that all products meet the highest standards for industrial applications.

## FLOW MONITORS



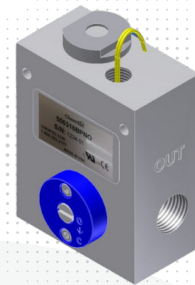
### 125 Series

Offers a broad range of adjustability, compact, high resolution, minimal pressure drop. Flow Ranges for air: 30-16,000 SCC/M and Liquid: 500 ML/M. Max. Pressure 3000 PSIG (316SS only). Port: 1/8", FNPT. +/-2% repeatability. Materials: Teflon®, Brass, 316SS.



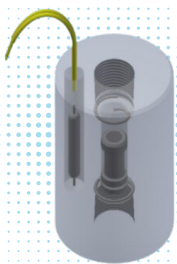
### 125 BP Series

Offers close on/off differential, adjustable, compact, high resolution. Flow Ranges for Air: 100- 60,000 SCC/M & Water: 3-950 ML/M. Max. Pressure 3000 PSIG. Port: 1/8" FNPT. Materials: Teflon®, Brass, 316SS.



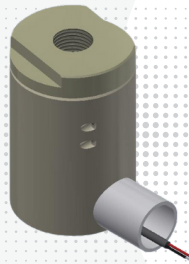
### 500 BP Series

Offers 180 degrees in-line porting, adjustable unit, high resolution, close on/off differential, minimal pressure drop. Flow Ranges for Air: .20-75 SCFM and Water: .03-10 GPM. Max. Pressure 3000 PSIG. Port: 1/2" FNPT. Materials: Teflon®, Brass, 316SS.



### LPH Series

Visual indication of flow, no seals, in-line vertical plumbing, fixed actuation point, non-adjustable, close on/off differential. Flow Ranges for Air: 50-45,300 SCC/M and Water: 1-2200 ML/M. Max. Pressure 3000 PSIG. Port: 1/8" & 1/4" FNPT. Materials: Teflon®, Brass, Acrylic, 316SS.



### LFS Series

Non-adjustable, close on/off differential, in-line vertical plumbing, non-restrictive at higher flows. Flow ranges: 0.10 – 2 GPM. Max Pressure: 100 PSIG. Inlet port: 1/2" FNPT. Outlet port: Conduit 1/2" female slip fit. Material: Polypropylene



### CCM Series

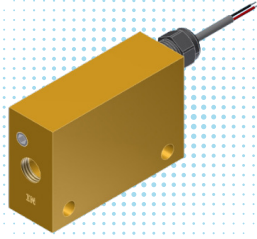
Minimal pressure drop, adjustable, high resolution. Flow Ranges for Air: 10-16,000 SCC/M and Water: 1-500 CC/M. Max. Pressure 100 PSIG. Inlet port: 1/8" FNPT, Outlet port: 1/4" FNPT. Materials: PVC.

## FLOW MONITORS



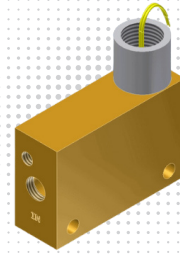
### FS Series

Fixed actuation point, non-adjustable, close on/off differential, no seals, in-line vertical porting. Flow Range for Water: 0.25-8.50 GPM. Max. Pressure 500 PSIG. Port sizes: 1/2", 3/4", 1". Materials: PVC (0.15-4 GPM; 100 PSIG), Brass, 316SS.



### LCA Series

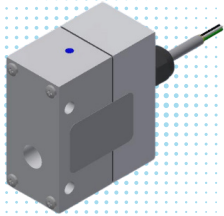
Detects loss of flow, dependable, adjustable for high or low flow. Flow Range for Water: 0.10-7.5 GPM. Flow Range for Air: 14.16-114.60 SLPM. Max Pressure: 3000 PSIG. Port sizes: 1/4", 3/8", 1/2", 3/4" FNPT. Materials: PVC, Acrylic, Brass, 316SS.



### FAV Series

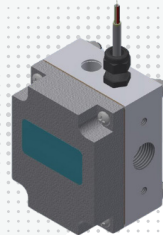
Monitors higher flows of gases and liquids; Confirms normal flow conditions; Adjustable or factory preset. Flow Ranges for Air: 0.5-120 SCFM and Water: 0.4-20.0 GPM. Max Pressure: 3000 SPIG. Port sizes: 1/4", 3/8", 1/2", 3/4" FNPT. Materials: Brass or 316SS.

## FLOW METERS



### MAO 125/250 Series

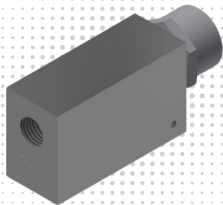
Three signal outputs: Analog, Digital, and Current Loop. Economical and reliable, this flow meter has one single moving part, in-line metering, no rotation, no seals, no bearings, and cannot be damaged by over-ranging. Flow Ranges for Water: 1800 ML/M (125 Series) & 0-500 (250 Series). Max. Pressure: 80 PSIG & Operating Temps up to 180 degrees Fahrenheit. Port sizes: 1/8", 1/4" FNPT. Materials: Teflon®.



### MAO 500 Series

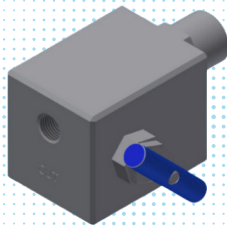
Three signal outputs in one: Analog, Digital, and Current Loop. Economical and reliable, this flow meter has one single moving part, in-line metering, no rotation, no seals, no bearings, and cannot be damaged by over-ranging. Flow Range for Water: 0-3.5 GPM. Max. Pressure: 80 PSIG, Operating Temps up to 180 degrees Fahrenheit. Port Size: 1/2" FNPT. Materials: Teflon®.

## EXCESS FLOW VALVES



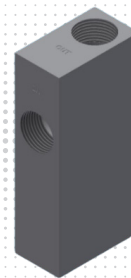
### EFV Series

Field adjustable with Flow Ranges for Air: 0.018-130 SCFM and Water: 0.004-20 GPM. Max. Pressure: 3000 PSIG. Port Sizes: 1/8", 1/4", 3/8", 1/2", 3/4" FNPT. Materials: Brass, 316SS.



### EFV MRS Series

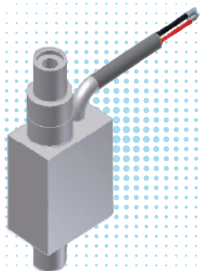
Resets automatically, controlled bleed or positive shut-off, field adjustable. Flow Ranges for Air: 0.018- 130 SCFM and Water: 0.004-20 GPM. Max. Pressure: 3000 PSIG. Port Sizes: 1/8", 1/4", 3/8", 1/2", 3/4" FNPT. Materials: Brass, 316SS.



### HPEFV Series

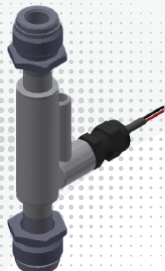
High pressure, field adjustable, resets manually. Flow Ranges for Air: 0.14-130 SCFM and Water: 0.026- 20 GPM. Max. Pressure: 6000 PSIG. Port sizes: 1/4", 1/2", 3/4" FNPT. Materials: Brass, 316SS.

## ULTRA-HIGH PURITY



### LPH UHP 250/375 Series

Offers compact design and ultra-high purity capabilities for precision applications. Features close on/off differential, no seals, and an internal finish to 10RA. Flow is monitored through in-line vertical plumbing with switch contact output. Suitable for Ultra High Purity Gases. Materials: 316L Stainless Steel. Flow Setting Accuracy:  $\pm 10\%$  of actuation points. Repeatability:  $\pm 1\%$ .



### LPH UHP 8 Series

Compact and designed for ultra-high purity applications, including semiconductor gases. Features close on/off differential, no seals, and an internal finish to 10RA. Provides in-line vertical plumbing and switch contact output for monitoring normal flow conditions. Materials: 316L Stainless Steel. Flow Setting Accuracy:  $\pm 10\%$  of actuation points. Repeatability:  $\pm 1\%$ .