

LFS Series

Non-Adjustable Flow Monitor

05

Key Features

Chemically inert, Non-restrictive at higher flows.

Features

- Close On-Off Differential
- In Line Vertical Plumbing
- Confirms: Normal Flow Conditions
- Senses: High Flow or Low Flow Conditions
- Material: Polypropylene
- Output: Switch Contact

Applications

- Deionized Water
- Chemical Process Systems
- Cooling Systems
- Heat Pump Systems
- Laser Cooling Systems

Operation

As flow is established upward through the unit and continues to increase, the pressure differential across the magnetic piston increases until it overcomes the magnetic piston's resistance (mass). The magnetic piston actuates a hermetically sealed reed switch, which is encapsulated in the body of the unit, out of the air/water path. This is a snap action and occurs in the decreasing mode as well.

- Actuation Points for increasing flow
- Calibration Accuracy $\pm 10\%$ of actuation point
- Deactuation (decreasing flow) averages 10% less than actuation (increasing flow)
- Repeatability $\pm 2\%$
- Unit will pass greater flows

Temperature Operating Range

- 0° to 228°F (-17° to 104°C) for Brass and Stainless Steel
 - 32° to 120°F (0° to 49°C) for Polypropylene
- For other temperature ranges consult factory.

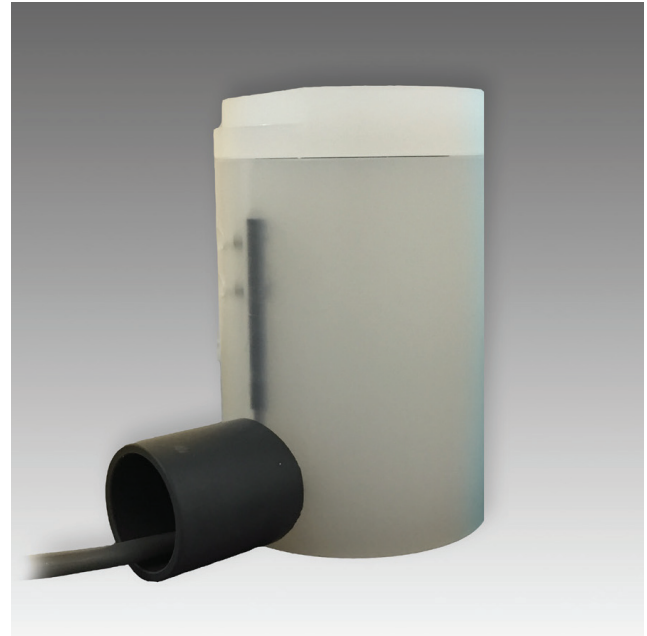
Specifications				
Unit	Weight OZ (gm)	Max Working Pressure PSIG (barg)	Wetted Parts	Seals
Polypropylene	10.469 (0.213)	100 (6.89)	PP, Epoxy	Viton

Pressure Loss

ΔP at 5 GPM (18.925) PSID (BARD)

All set points - 1.00 (0.069)

CE



Calibration Table


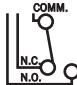
Model	Water LPM (GPM)
LFS-500-PP-C	
-1	0.38 (0.10)
-2	1.89 (0.50)
-4	3.78 (1.00)
-6	5.68 (1.50)
-8	7.57 (2.00)

Corrections must be made for other liquids, line pressures and temperatures. Please consult your representative or the factory.

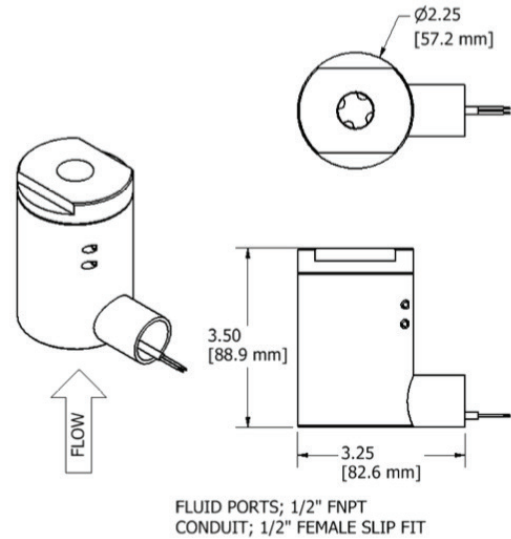
LFS Series

Non-Adjustable Flow Monitor

Switch Data	SPST	SPDT
Maximum Switching Voltage		
DC (V)	200	100
AC (V)	150	100
Contact Rating		
DC (W)	50	3
DC (VA)	70	3
Maximum Switching Current (A)		
DC (A)	1.0	0.25
AC (A)	0.7	0.25

Leads	SPST UL File #E70063	SPDT UL File #E471070
 <p>leads 39 in. min. from body 22 AWG, PVC jacketed wire, red, black</p>	 <p>leads 39 in. min. from body 22 AWG PVC jacketed wired, <ul style="list-style-type: none"> • red - N.C. • black - N.O. • white - Common </p>	

Fluid	Ports: Inlet/Outlet	Ports Inches
Model	FNPT	Electrical Conduit
LFS	1/2"	1/2" Female Slip Fitting



Installation

Mount with inlet port down vertically. A 100 micron filter is recommended.

How to Order

Sales@ChemTec.com | 800.222.2177

Model	Calibration	Switch
LFS 500 PPC	-1 -2 -4 -6 -8	N.O. Single Pole Single Throw Normally Open SPDT Single Pole Double Throw

Note: All dimensions are subject to change for quality improvement. Not responsible for printing errors.
 Viton®