

LPH SERIES

NON-ADJUSTABLE FLOW MONITOR

Monitor Flows of Corrosive and Non-Corrosive Liquids and Gases

KEY FEATURES

Compact, Dependable, Economical

FEATURES

- Close On-Off Differential
- Visual Indication of Flow with Acrylic Model
- No Seals
- In Line Vertical Plumbing
- Materials: Acrylic, Brass or 316ss
- Confirms: Normal Flow Conditions
- Senses: High Flow and Low Flow Conditions
- Output: Switch Contact

APPLICATIONS

- Analyzers
- Kidney Dialysis Machines
- Micro Biomedical Machines
- Laser Cooling Systems
- Bubbler Systems
- Pollution Sampling Equipment



CALIBRATION POINTS

MODEL	AIR SCC/M(SCFH)	WATER ML/M(GPH)	PORTS FNPT
LPH-125-0	50 (0.105)	1 (.016)	1/8"
-1	120 (0.254)	2 (.03171)	
-2	560 (1.187)	16 (.25369)	
-3	750 (1.589)	30 (.47567)	
-4	1,300 (2.755)	45 (.71350)	
-5	1,400 (2.966)	50 (.79278)	
-6	1,900 (4.026)	65 (1.0306)	
-7	2,500 (5.297)	85 (1.3477)	
-8	2,700 (5.721)	90 (1.4270)	
-9	3,300 (6.992)	105 (1.6648)	
-10	3,600 (7.628)	120 (1.9027)	
-11	5,200 (11.02)	170 (2.6955)	
-12	6,000 (12.71)	200 (3.1711)	

LPH-250-1	350 (0.742)	7 (0.111)	1/8"
-2	6,000 (12.71)	200 (3.171)	
-3	7,500 (15.89)	250 (3.964)	
-4	9,500 (20.12)	315 (4.994)	
-5	10,500 (22.25)	346 (5.486)	
-6	12,500 (26.49)	400 (6.342)	
-7	15,200 (32.21)	500 (7.928)	
-8	24,000 (50.85)	760 (12.05)	

LPH-375-1	3,000 (6.36)	70 (1.110)	1/4"
-2	15,200 (32.21)	475 (7.531)	
-3	30,300 (64.20)	950 (15.06)	
-4	37,000 (78.40)	1,425 (22.59)**	
-5	45,300 (95.99)	2,200 (34.88)**	

**Teflon® encapsulated piston not available

CE Recognized 73/23/EEC/93/68/EEC

Recognized File E75356

OPERATION

When fluid flows through the unit it causes the magnetic piston to move up at the calibration point. This displacement is caused by the pressure differential from the fluid flowing through the unit. The magnetic piston actuates a hermetically sealed reed switch, which is encapsulated in the body of the unit, out of the fluid path. Decreasing the flow below the calibration point causes the reed switch to de-actuate.

- Actuation points for air at 68° F and 14.7 PSIA with increasing flow.
- Deactuation (decreasing flow) averages ±10% less than actuation (increasing flow).
- Flow setting accuracy 10% of calibration points shown.
- Repeatability ±1%.
- Unit will pass greater flows.

PRESSURE LOSS TABLE

ΔP AT SET POINT
MBARS (INCHES OF WATER)

ALL UNITS 11.2 (4.5)

Corrections must be made for other gases, line pressures and temperatures. Please consult your representative or the factory.

SPECIFICATIONS

BODY MATERIAL	WEIGHT OZ. (gm)	MAX WORKING PRESSURE PSIG (barg)	WETTED PARTS
Acrylic	4 (113.4)	100 (6.89)	Acrylic, 316SS, Epoxy
Brass	8 (226.8)	1500 (103.42)	Brass, 316SS, Epoxy
316SS	8 (226.8)	3000 (206.84)	316SS, Epoxy
Teflon	4 (113.4)	80 (5.52)	Teflon®

TEMPERATURE OPERATING RANGE

- 0 to 220° F (-17 to 104° C) for 316ss, Brass and Teflon®
- 32 to 160° F (0 to 71° C) for Acrylic

For other temperature ranges consult factory.

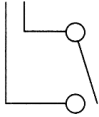
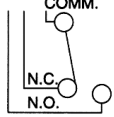
CTE
CHEM TEC

LPH SERIES

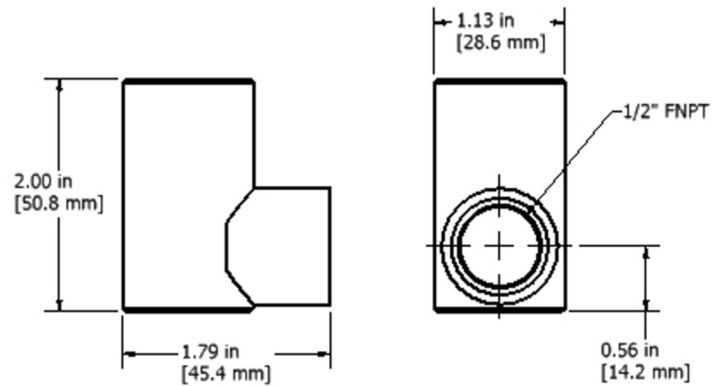
NON-ADJUSTABLE FLOW MONITOR

Monitor Flows of Corrosive and Non-Corrosive Liquids and Gases

SWITCH DATA	SPST	SPDT
Maximum Switching Voltage		
DC (V)	200	175
AC (V)	150	120
Contact Rating		
DC (W)	50	5
AC (VA)	70	5
Maximum Switching Current (A)		
DC (A)	1.0	.25
AC (A)	0.7	.25

LEADS	SPST	SPDT(Optional)
	leads 18 in. min. from body 22 AWG, TFE insulation	 COMM. N.C. N.O.
		leads 18 in. min. from body 24 AWG, TFE insulation • green - N.C. • blue - N.O. • white - Common

Above values for resistive loads only. For inductive loads, surge current and rush current - contact protection is required, consult your local representative. SPDT UL Recognized (E47258).



INSTALLATION

Mount with the inlet port down vertically. A 10 micron filter is recommended.

LEADS UP	Normally Open
LEADS DOWN	Normally Closed
CONDUIT	N.O. Conduit Offset Down
	N.O. Conduit Offset Up

HOW TO ORDER (Please see Custom Page for Special Options.)

Model	Size	Materials	Electrical Conduit Optional	Switch Options	Options
LPH	125 250 375	A Acrylic B Brass S 316ss T Teflon®	C (Metallic Bodies Only) (1/2" FNPT)	N.O. Single Pole Single Throw Normally Open N.C. Single Pole Single Throw Normally Closed SPDT Single Pole Double Throw DSNONO Double Switch N.O./N.O. DSNONC Double Switch N.O./N.C. DSNCNC Double Switch N.C./N.C.	TFE Teflon® Encapsulated Piston O2 Oxygen Cleaned HT High Temperature Option 340° F (171° C) metallic body only HV High Voltage Switch (220 VAC)

®Teflon - E.I. Dupont & Co

Note: All dimensions and specifications are subject to change for quality improvement. Not responsible for printing errors.

