

EFV SERIES

ADJUSTABLE EXCESS FLOW VALVE

For Preventing Uncontrolled Flows of Liquids and Gases

KEY FEATURES

Controls excessive flows.

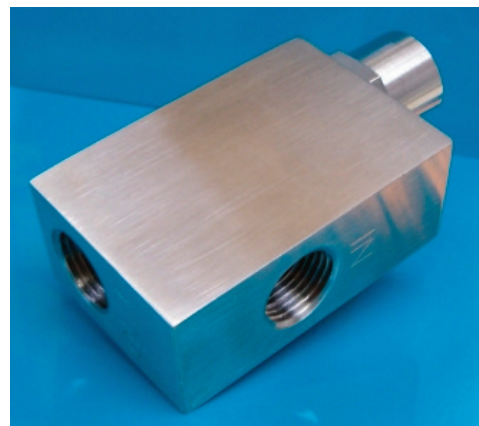
FEATURES

- Controlled Bleed, Resets Automatically
- Field Adjustable
- Positive Shut-off
- Attitude Variable Mounting
- Function: Restricts or Shuts Off Flow
- Output: switch contact optional
- Materials: 316ss or Brass Body

APPLICATIONS

- Fitting Failure
- Regulator failure
- Hydraulic control
- Gas Analyzers
- Toxic Gas and Liquid Releases

Patent No's 4,858,647 • 4,905,844 • 5,033,311
Others may apply.



OPERATION

Flow enters the unit and makes a right angle to the outlet port across the nose of a magnetic piston. The piston is held in place by attraction to an adjusting screw magnet. A pressure differential is created by flow across the piston. When the differential is great enough, the piston slides to a seat at the outlet port. The flow rate at which the piston actuates can be changed externally by turning the adjusting screw, thereby changing the piston's relationship with the flow stream.

In this auto reset model after actuation, the piston rests on a metal to metal seat which allows a controlled bleed. To reset the unit, pressure must be equalized on both sides of the piston. If the source is turned off, either upstream or downstream, the bleed will equalize the pressure and the valve will automatically reopen by magnetic repulsion from the fixed magnet located in the valve body.

For positive shut-off an elastomer is used on the nose of the piston. When it comes to rest on the seat it provides a bubble tight closure. To reopen the valve there are two options.

1. The upstream pipeline must be bled to atmosphere if the line downstream is at atmosphere.
2. A by-pass line with an on/off valve must be installed to port the upstream pressure to the downstream pipeline to equalize the pressure.

Our MRS series is available with the by-pass system as an integral part of the unit.

- Actuation points for air at 68° F and 14.7 PSIG.
- Corrections must be used for other gases, line pressures and temperatures.

Please consult your representative or the factory.

TEMPERATURE OPERATING RANGE

- 0° to 220° F (-17° to 104° C)

For other temperature ranges consult factory.

CALIBRATION POINTS

MODEL	ADJUSTABLE RANGE AIR SLPM (SCFM)	ADJUSTABLE RANGE WATER LPM (GPM)	PORTS FNPT
EFV-125	0.5 to 155.70 (0.018 to 5.5)	0.015 to 4.5 (0.004 to 1.2)	1/8"
EFV-250	4 to 1132 (0.14 to 40)	0.100 to 15.1 (0.026 to 4.0)	1/4"
EFV-375	85 to 1840 (3.0 to 65)	0.380 to 15.1 (0.100 to 4.0)	3/8"
EFV-500	142 to 2123 (5.0 to 75)	1.90 to 37.8 (0.50 to 10.0)	1/2"
EFV-750	425 to 3681 (15.0 to 130)	3.80 to 75.7 (1.0 to 20.0)	3/4"

PRESSURE LOSS TABLE

MODEL	SET POINT AIR SLPM (SCFM)	WATER LPM (GPM)	ΔP TO ATMOSPHERE BARD (PSID)
EFV-125	0.50 (0.018)	0.015 (0.004)	0.08 (1.2)
	75 (2.63)	2.65 (0.70)	0.11 (1.6)
	155 (5.5)	4.50 (1.20)	0.21 (3.0)
EFV-250	4 (0.14)	0.1 (0.26)	0.21 (3.0)
	500 (17.50)	5.0 (1.32)	0.41 (6.0)
EFV-375	1132 (39.62)	5.1 (3.99)	0.83 (12.0)
	85 (2.98)	0.38 (0.10)	0.10 (1.5)
	900 (31.50)	10.0 (2.64)	0.28 (4.0)
EFV-500	1840 (64.40)	15.1 (3.99)	0.83 (12.0)
	142 (4.97)	1.9 (0.50)	0.07 (1.0)
	1000 (35.00)	25.0 (6.60)	0.28 (4.0)
EFV-750	2123 (74.31)	37.8 (9.98)	0.48 (7.0)
	425 (14.88)	3.8 (1.00)	0.14 (2.0)
	1800 (63.00)	4.7 (1.24)	0.21 (3.0)
	3681 (128.84)	75.7 (19.98)	0.34 (5.0)

CE Recognized 73/23/EEC/93/68/EEC
RoHS Recognized File E75356

CTE
CHEM TEC

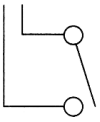
234 SW 12th Ave • Deerfield Beach, FL 33442 • 800-222-2177 • 954-428-8745 fax • www.chemtec.com • info@chemtec.com

1057 CTE EFV Series

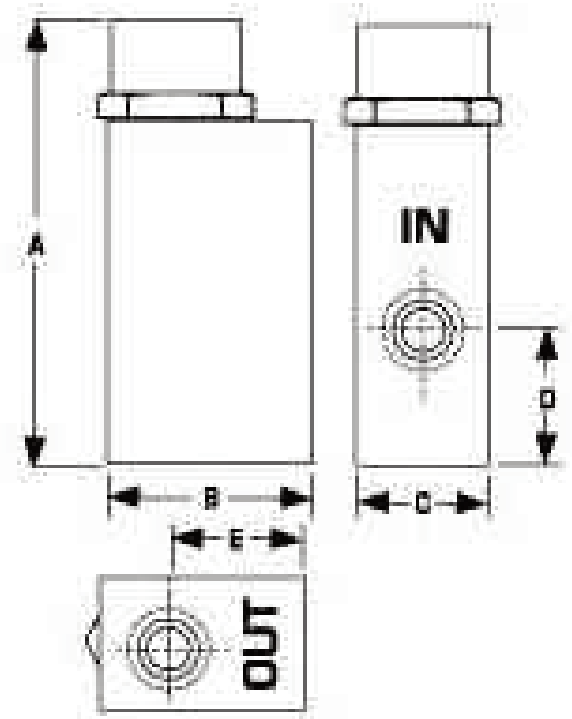
EFV SERIES

ADJUSTABLE EXCESS FLOW VALVE

For Preventing Uncontrolled Flows of Liquids and Gases

SWITCH DATA	SPST	LEADS SPST
Maximum Switching Voltage		
DC (V)	200	
AC (V)	150	
Contact Rating		
DC (W)	50	leads 18 in. min. from body 22 AWG, TFE insulation
AC (VA)	70	
Maximum Switching Current (A)		
DC (A)	1.0	
AC (A)	0.7	

Above values for resistive loads only. For inductive loads, surge current and rush current - contact protection is required, consult your local representative. SPDT UL Recognized (E47258).



SPECIFICATIONS

BODY MATERIAL	MAX WORKING PRESSURE PSIG (barg)	WETTED PARTS	SEAL
Brass	1500 (103.42)	Brass, Epoxy, Delrin**	Viton®
316ss	3000 (206.84)	316ss, Epoxy	Viton®

**Brass Piston in 125 Unit.

INSTALLATION

The 125, 250 and 375 series can be mounted in any position. The 500 and 750 series can be mounted in any position except with the outlet port down. We suggest the unit be calibrated in the attitude in which it will be installed. An actuation point approximately 3 or 4 times normal flow rate should be chosen to avoid the valve actuating from initial pressurization of the system and normal surges. If flow is kept constant, an actuation point 10% above the normal rate may be used.

DIMENSIONS INCHES (MM)

Model	WEIGHT	A	B	C	D	E
EFV125	0.25 (113.4)	2.5 (64)	1.00 (25)	0.75 (19)	0.70 (17)	0.63 (16)
EFV250	0.50 (226.8)	3.3 (84)	1.50 (38)	1.00 (25)	1.00 (25)	1.00 (25)
EFV375	0.50 (226.8)	3.3 (84)	1.50 (38)	1.00 (25)	1.00 (25)	1.00 (25)
EFV500	1.00 (453.6)	4.0 (102)	2.00 (50)	1.25 (31)	1.25 (31)	1.38 (35)
EFV750	1.50 (680.4)	4.9 (124)	2.2 5(57)	1.25 (31)	1.63 (41)	1.63 (41)

HOW TO ORDER (Please see Custom Page for Special Options.)

Model	Size	Materials	Positive Shut-Off	Electrical Switch	Options
EFV	125	B Brass	PSO	ES	Any of the following options may be added.
	250	S 316ss	Blank for Controlled	Normally Open*	O2 Oxygen Cleaned
	375	(Other material	Bleed Model	(ES not available on	HT High Temperature Unit 340° F (171° C)
	500	available on		125 model)	KZ Kalrez® Seals
	750	request)		Factory Preset	EPR EPR Seals
				Required	FP Factory Presetting (State flow rate, medium and line pressure)

*Consult factory

*Viton - E.I. Dupont & Co

*Kalrez - E.I. Dupont & Co

Note: All dimensions and specifications are subject to change for quality improvement. Not responsible for printing errors.

